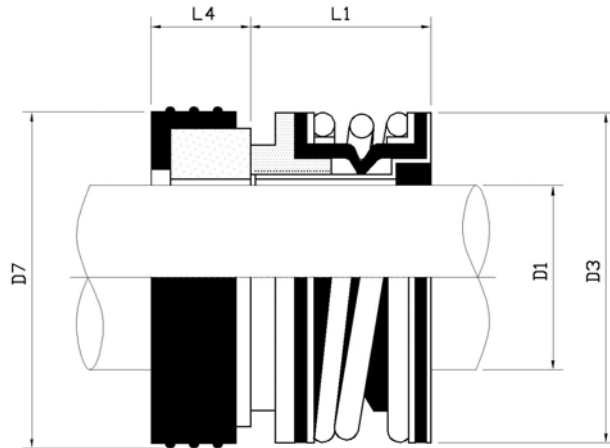


MS6



Operating Conditions

Temperature: -30°C to +200°C
(Depending on materials used)

Pressure: Up to 5 bar, 75 psi

Speed: Up to 5m/s, 1000fpm

Materials available

Seal face: carbon, ceramic, sic

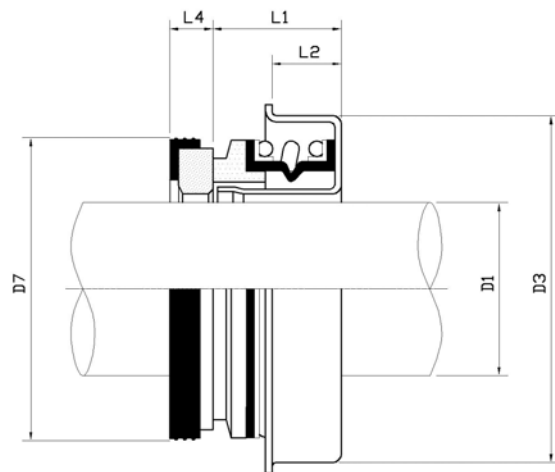
Elastomer: nitrile, viton

| D1(IN) | D3 | D7 | L1 | L4 | L=L1+L4 |
|--------|------|-------|------|------|---------|
| 0.375 | 24 | 22.2 | 16.7 | 6.3 | 23 |
| 0.500 | 27 | 25.4 | 16.7 | 8 | 24.7 |
| 0.625 | 31 | 31.75 | 18.3 | 10.3 | 28.6 |
| 0.750 | 35 | 34.95 | 18.3 | 10.3 | 28.6 |
| 1.000 | 43.5 | 41.3 | 20.7 | 11 | 31.7 |

Equivalent to

T6, T16, BO4

MS6A



Design Features

stationary seal design

Pressure: Up to 4 bar , 60 psi

Speed: up to 45m/s, 9000fpm

Materials available

Seal face: carbon, ceramic, sic

Elastomer: nitrile, viton

Equivalent to

T6A, T68, T7, T790, BO3

| D1 | D3 | D7 | L1 | L2 | L4 |
|-------|------|------|----|----|------|
| 0.375 | 24.0 | 23.0 | | 8 | |
| 0.500 | 28.5 | 25.4 | | 8 | 6.3 |
| 0.500 | 30.0 | 25.0 | | 8 | 5.0 |
| 0.500 | 33.4 | 25.4 | | 8 | 6.3 |
| 0.625 | 36.5 | 31.0 | | 10 | 10.3 |
| 0.625 | 38.1 | | | 10 | |
| 0.750 | 40.0 | 35.0 | | 10 | 10.3 |
| 1.000 | 47.0 | 41.3 | | 12 | |
| 1.125 | 52.0 | 48.0 | | 12 | |